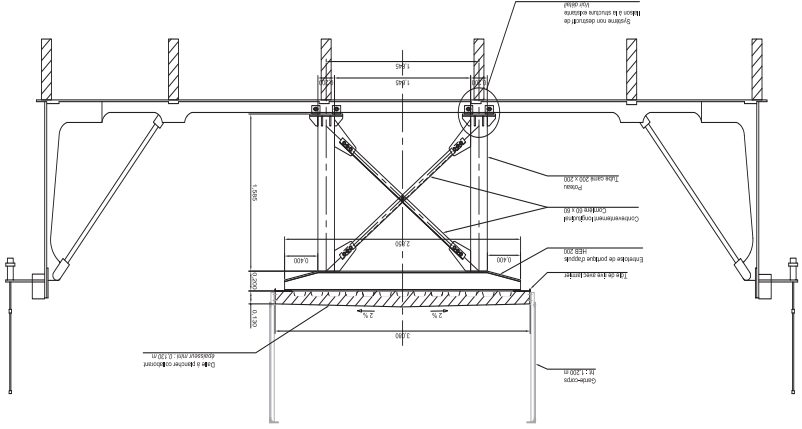


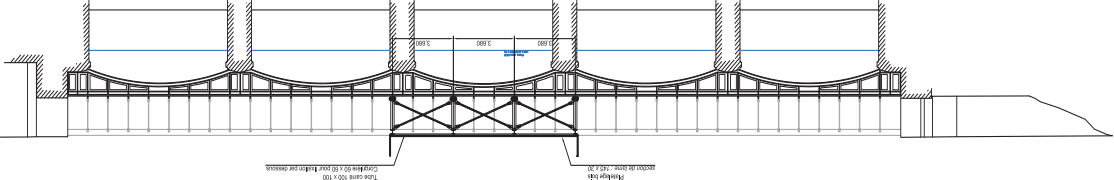
Coupe transversale de la structure de la passerelle

Ech : 1/20



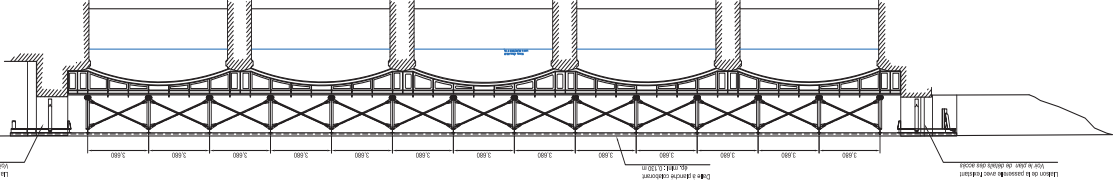
Elevation de la structure des bétonnières

Ech : 1/100



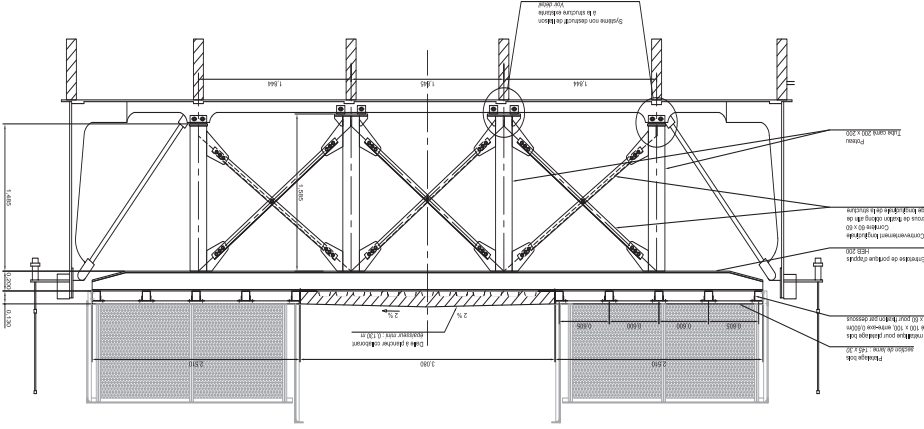
Elevation de la structure de la passerelle

Ech : 1/100



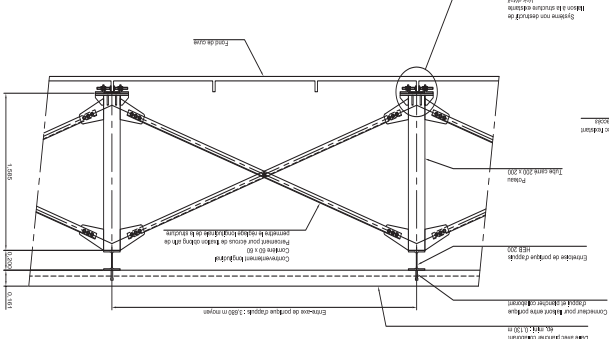
Coupe transversale de la structure de la passerelle

Ech : 1/20



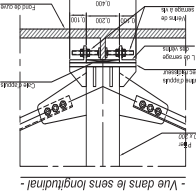
Détail de l'assemblage longitudinal entre portiques support

Ech : 1/20

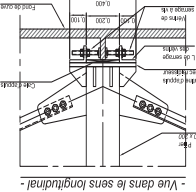


Détail du principe d'appuis sur l'ouvrage existant

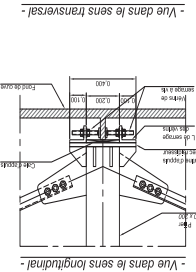
Ech : 1/10



- Vue dans le sens longitudinal -



- Vue dans le sens transversal -



Vue en plan de l'ouvrage

Ech : 1/100

